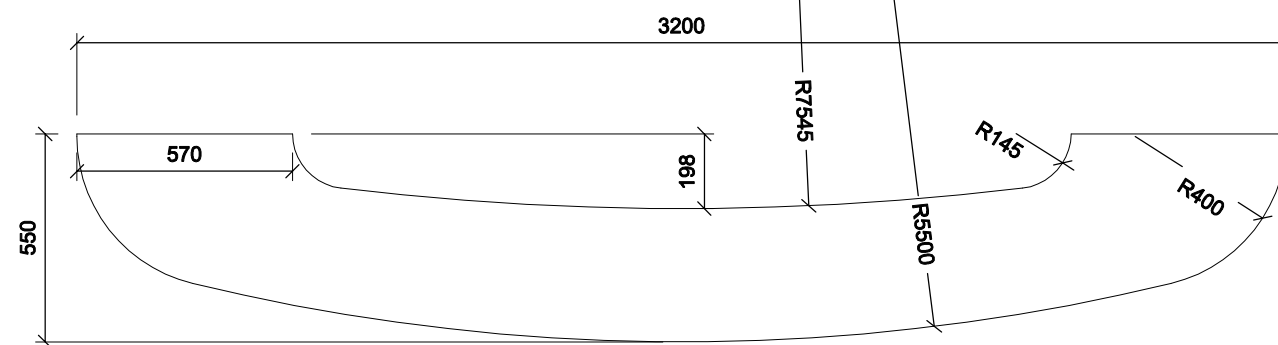
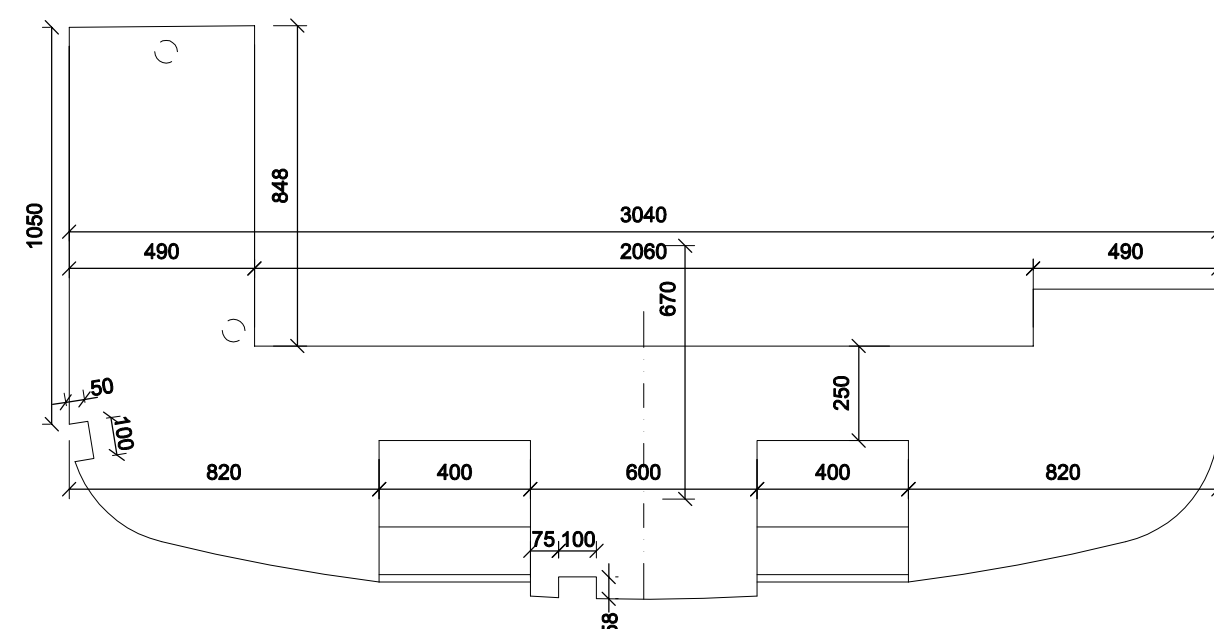
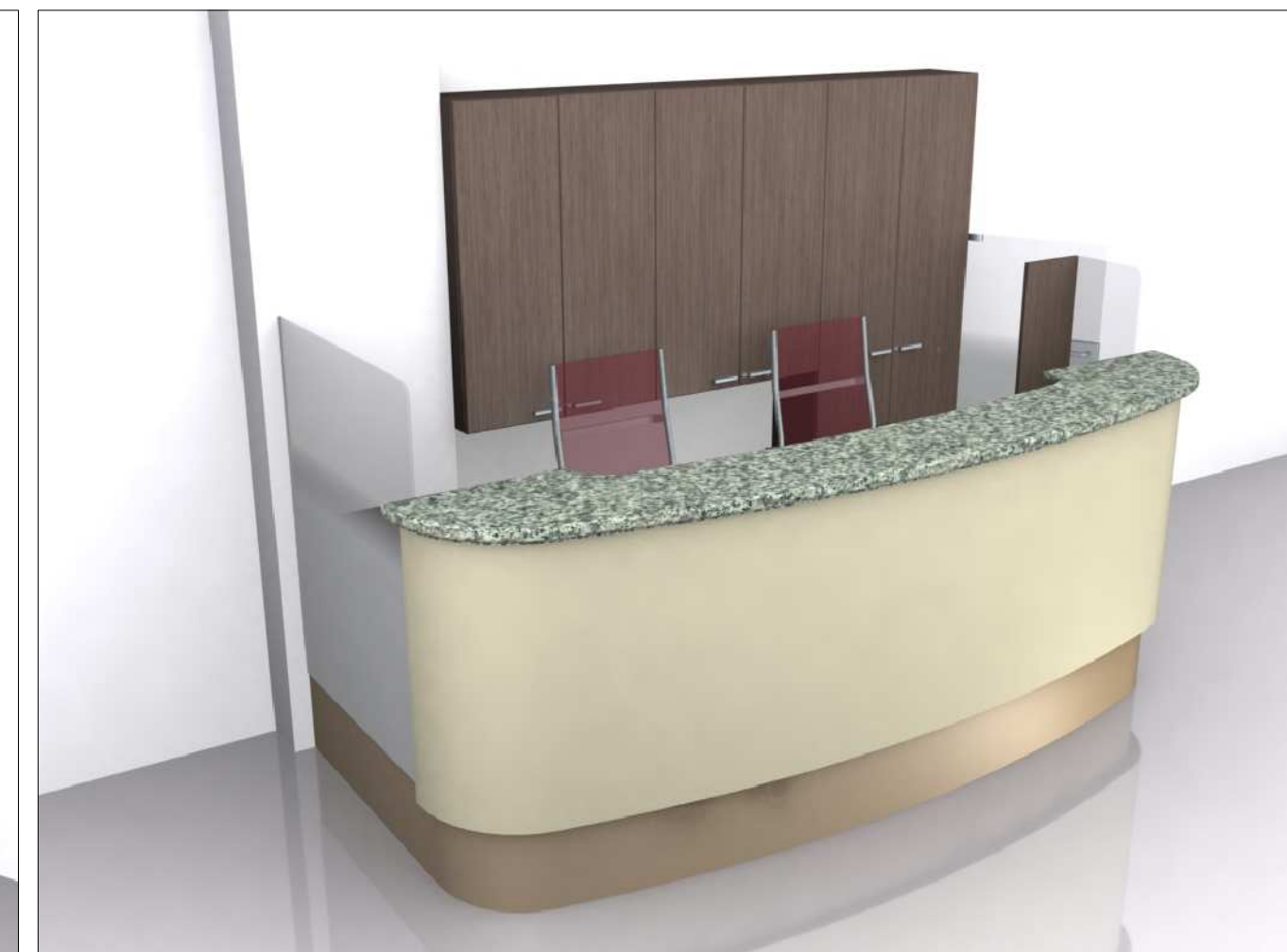
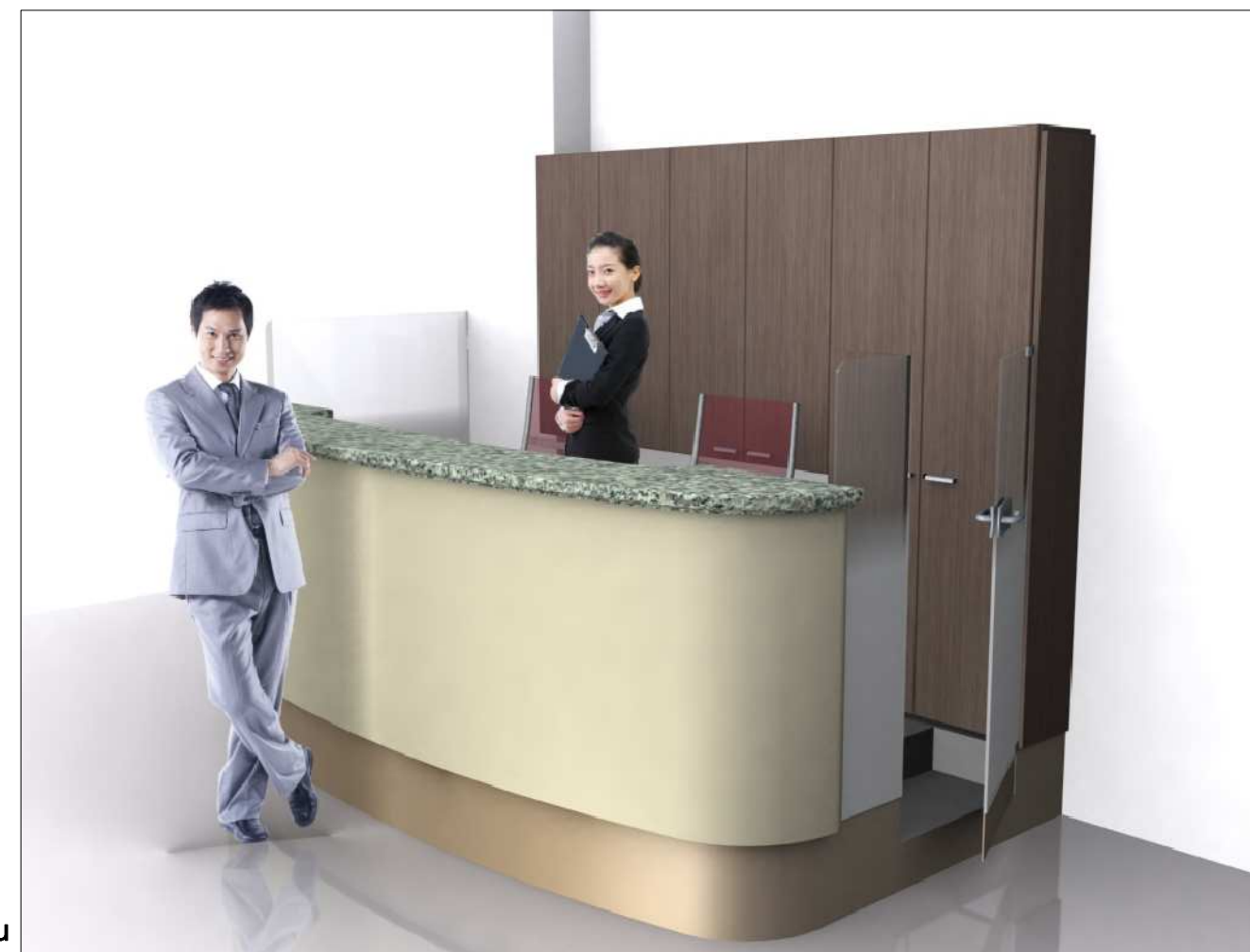


Technical drawing of a mechanical part. The drawing shows a side view of a component with a total width of 50 and a central hole with a diameter of 35. The top and bottom edges are rounded with a radius of R15. The drawing is a black and white line drawing with dimension lines and arrows indicating the measurements.



Q2- stolová zostava:
-vrchná doska: LDTD hr.25 mm EGGER H1484 s ABS hranou 2mm
-panely pre LCD monitory: LDTD hr.18 mm EGGER H1484
-cylindrické nohy hr 60mm, matný chróm



04— čelo:
- ohýbaná MDF-krémová

POHLED L'AVÝ

1042

1300

90°

POHLED ČELNÝ

Technical drawing showing the front view of a cabinet. The drawing includes a top section with six vertical compartments and a lower section with a dashed line indicating a fold-down top. A dimension line on the left indicates a height of 1270.

REZ A-A'

05- sklenné panely;
 -bezpečnostné kalené sklo
 -uzamykateľné dvere
 -čiasťotčne fóliované polopriesv. fóliou

Technical drawing showing a side view (REZ A-A') of a desk assembly. The drawing includes dimensions for the desk height (1270 mm), the height of the desk surface (820 mm), and the height of the lower section (300 mm). The desk surface is shown with a glass panel (05) and a locking door (06). The desk is supported by a base with a height of 720 mm. The drawing also shows a chair and a cabinet unit.

REZ B-B'

Technical drawing showing a cross-section of a door frame assembly. The drawing includes dimensions and labels for various components.

Dimensions:

- Top horizontal dimensions: 800, 800, 800
- Left vertical dimension: 1000
- Right vertical dimension: 1800
- Internal vertical dimension (right side): 240
- Internal vertical dimension (bottom right): 300
- Bottom right corner dimensions: 150, 150

Labels and Components:

- police**: Points to the door leaf.
- držáky pro klouby pro 600 kloubov lišty na poplaky vnitřní osvětlení**: Points to the hinge supports for the 600 mm hinge strips for internal lighting.
- výsuvná tyč**: Points to the sliding bar.
- obmedzo vac max. 70 retilkové**: Points to the limiting device.

07- pódium:

- kovová základná konštrukcia
- vrch, schody LDTD hr.18 mm+ sivý koberec
- sokel- hliníkový pás, prevedenie elox bronz
- vývody pre elektroinštalácie

09- ELEKTROINŠTALÁCIE



vývod 220V pre osvetlenie skrinky

elektr. žľab- výšk 300-1220mm
2x zásuvka 220V- výšk 1100mm

elektr. žľab- výšk 300-1220mm
4x zásuvka 220V- výšk 200mm
2x zásuvka 220V- výšk 1020mm
2x zásuvka LAN- výšk 1120mm
2x zásuvka telefon- výšk 1120mm
dvojvypínač LED osvetlenie- výšk 1170mm

elektr. žľab- výšk 300-995mm
4x zásuvka 220V- výšk 200mm
2x zásuvka LAN- výšk 100mm
1x zásuvka telefon

+ 0.000

AUTOR PROJEKTU	ING. MILAN KODHAJ		 Súľovská 70 821 04 Bratislava	
ZODP.PROJEKTANT	ING. ŠTEFAN TÓTH			
INVESTOR	MČ BRATISLAVA - STARÉ MESTO			
MIESTO A NÁZOV STAVBY: ÚPRAVA VSTUPNÝCH PRIESTOROV BUDOVY MŮ			DRUH DOK.	PPRS
			ČÍSLO ZAK.	109/2013
			DÁTUM	09.2013
			POČET FORM.	10 A4
OBJEKT 01 : HLAVNÝ OBJEKT			MIERKA	1 : 50
PROJEKT INTERIÉRU			Č. VYH.	DIEL
OBSAH VÝKRESU:				Č. VYKR.
INFOPULT				1